

Safety Precautions

- Do not use double-sided adhesive mounting tape to fix the light panels on the rough walls, wallpapers, brick walls, gray walls, and uneven walls;
- Do not use double-sided adhesive mounting tape for fixing in humid environments (tiles in bathrooms, toilets, etc.);
- Do not install the product on the ceiling without a reinforcement kit to prevent it from falling.
- Double-sided adhesive mounting tapes is not strong enough to fix the light board on the ceiling;
- Do not use metal or conductors to approach any exposed parts, such as controller connectors, power connectors, linkers and slots on the back of the light panels;
- The product is not waterproof, please do not wash or touch water;
- Do not leave the power cord idle on the ground to avoid stumbling;
- Children who are not supervised by adults are not allowed to use this product alone. If some parts of this product are imported, there is a risk of choking.

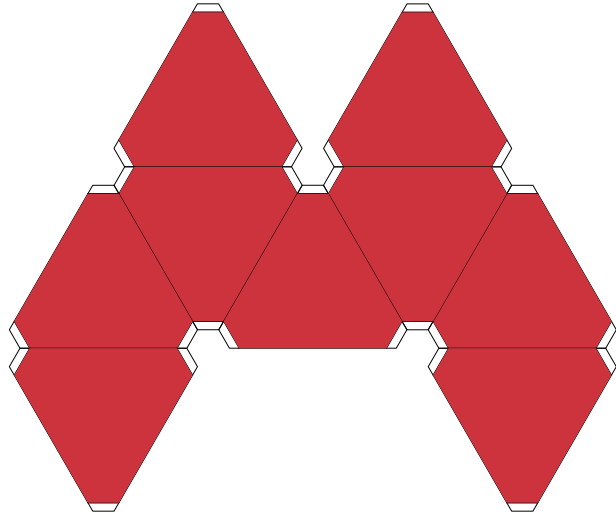


APP:Smart Life

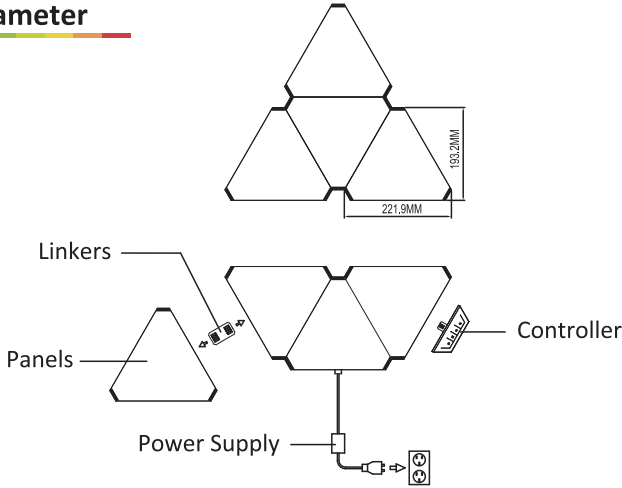


APP:Tuya Smart

SMART LIGHT PANELS  
USER’S MANUAL

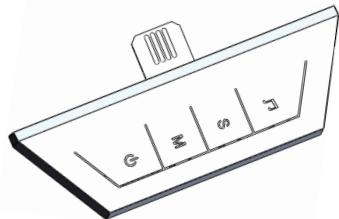


Basic Parameter



Luminance	100Lm (per panel)
CCT	2700K-6500K
Wattage of per panel	2W
Wattage of the driver	36W
Whether Dimming	Yes (via App or Voice)
Control protocol	Apple Homekit,Android, MIJIA,AmazonEcho
Shell	1-18PCS
V2	PC fire rating-V2
Operating temperature	-20°C to 40°C
Voltage	100 V-240V(Universal)
Photochromic configuration	RGBW
Communication protocol	WiFi (2.4Ghz b/g/n)
Lifetime	25,000 hours.
Optional number of light colors	16.7 million
Certifications	FCC PROP 65 CE PAHs ROHS

Instruction Manual for Controller function



- 1. Competitive Mode 2. KTV Mode 3. Home Theatre Mode



- Short press when it is on, switch the dynamic effects of the light board, a total of 11 dynamic effects are cyclically switched
  - Symphony and elegant (forward, backward)
  - Colorful gradient
  - White horse racing (forward, backward)
  - Red, green and blue horse racing (forward, backward)
  - Stacking (forward and backward)
  - Red meteor trailing
  - White meteor trailing
  - Red shuttle tail
  - seven-color meteor trailing



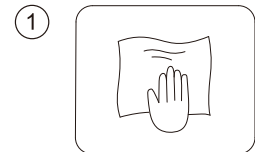
- Short press this key in the power-on state to switch the static color of the light board, a total of 8 static colors (red, green, blue, white, yellow, cyan, purple, pink)



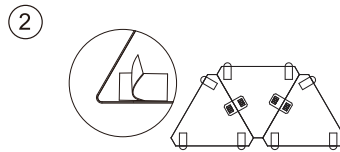
- Short press this button to switch the light;  
When the light is on, press and hold for about 10 seconds to enter the network configuration state. At this time, the light board is red and flashing. According to the light board flashing speed (slow flash or fast flash), perform the mobile APP network allocation operation. Fast flashing-enter the network state directly at 0.5s intervals; Slow flashing-the controller shares the WIFI hotspot (SmartLife-XXXX and SL-XXXX) every 2s. After the mobile phone is connected, you can re-enter the APP.

Instruction Manual for Intelligent Light Panels

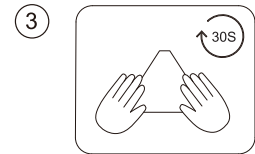
In order to prevent your light panels from falling off the wall, please pay attention to installation matters.



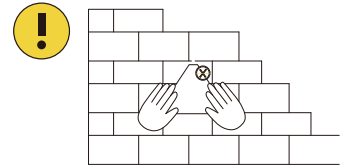
Please make sure that the wall or other installation surface is clean and free of dust or water



Use at least 3 pieces of double-sided adhesive mounting tapes for each light board water



When installing the light panels, be sure to press it hard for 30 seconds after sticking to the wall to ensure stability



Note: The double-sided adhesive mounting tapes that comes with the product is not suitable for brick walls, wallpaper, wooden boards, ceilings, walls with ash falling and other uneven surfaces